

Update on Archaeological Resources Assessment for Phase 1 Dredge Areas

Prepared by URS Corp for General Electric

Presented by John Vetter, USEPA

CAG Meeting

March 23, 2006



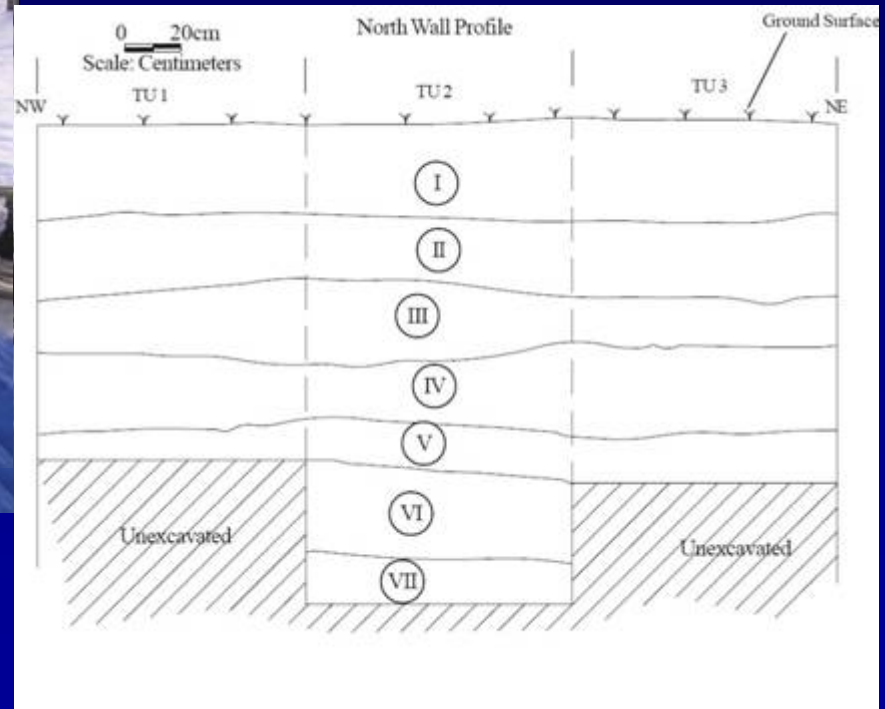
Area L

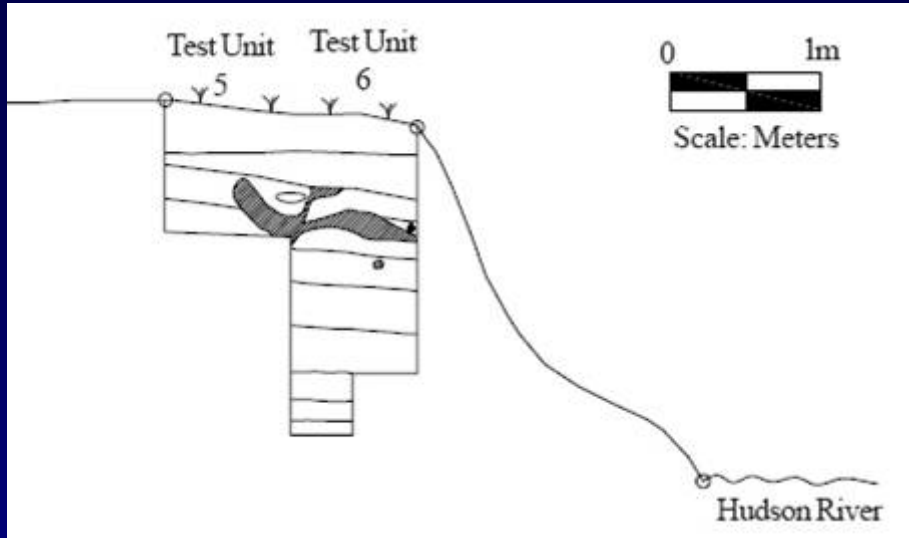


Area L

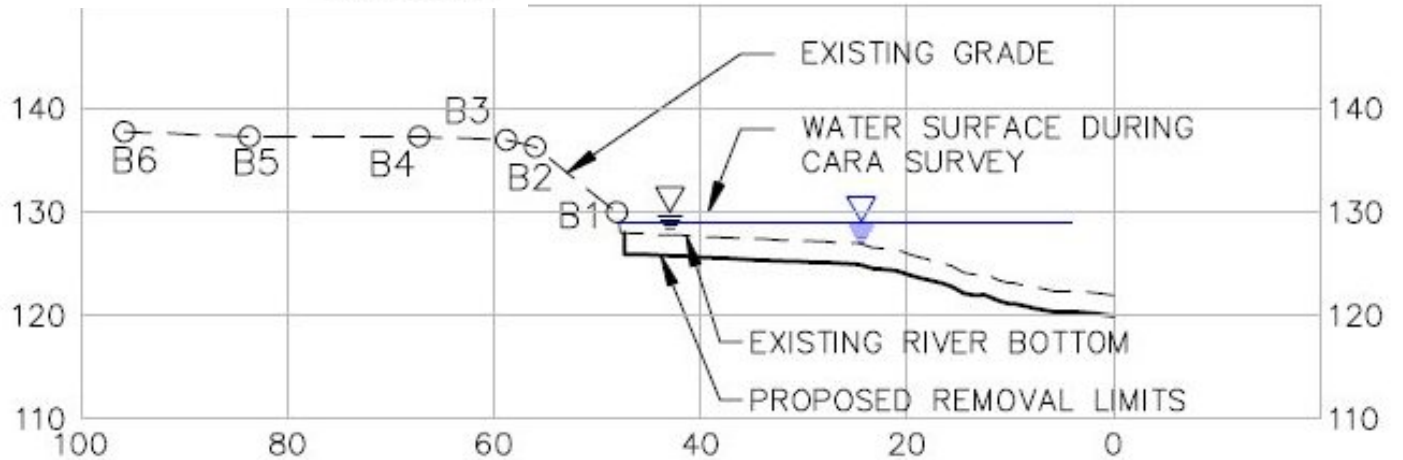


Area L – Trench A



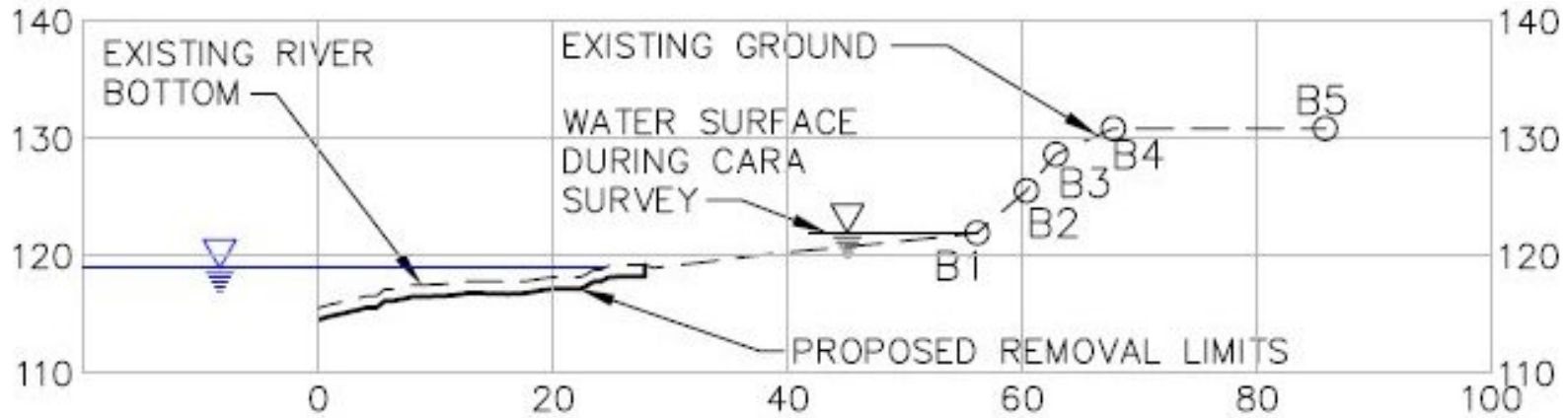
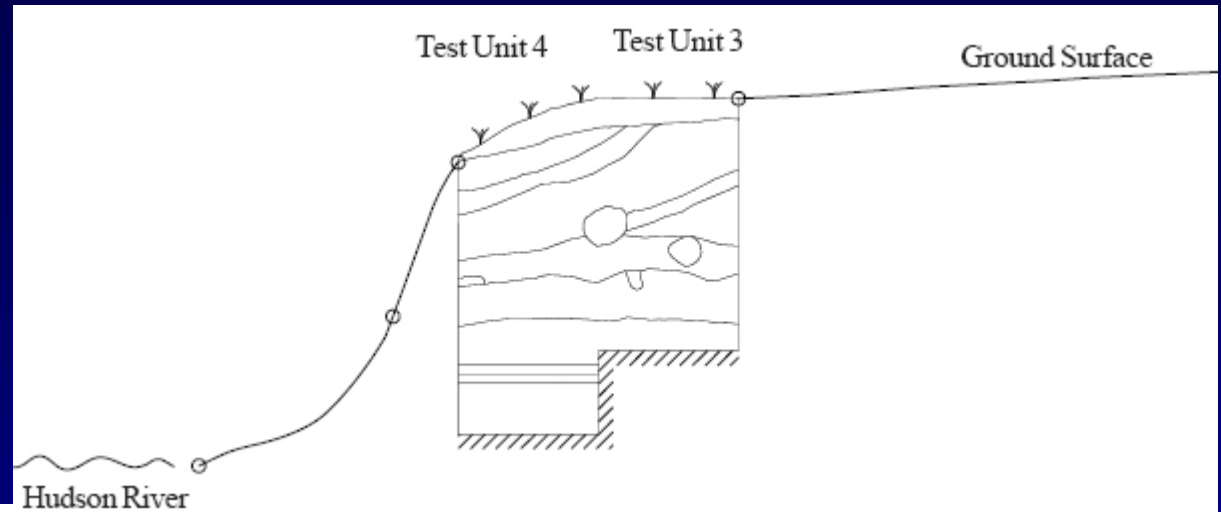


Area L – Trench B



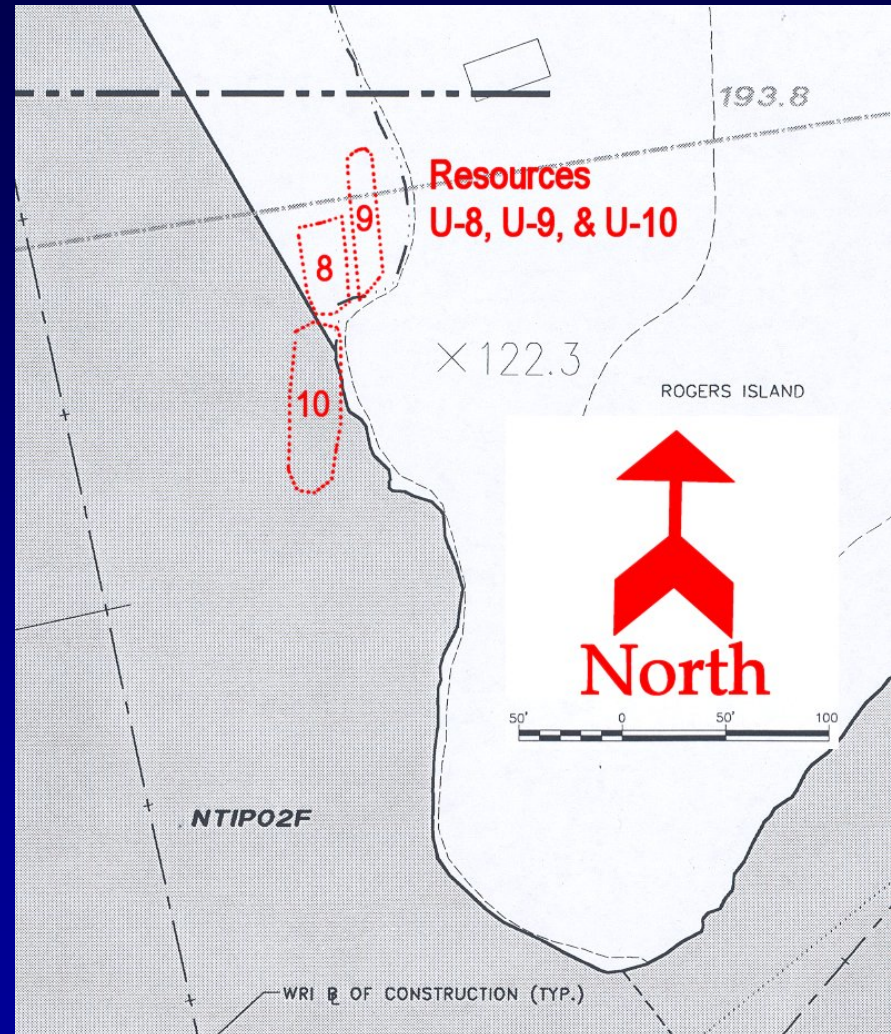
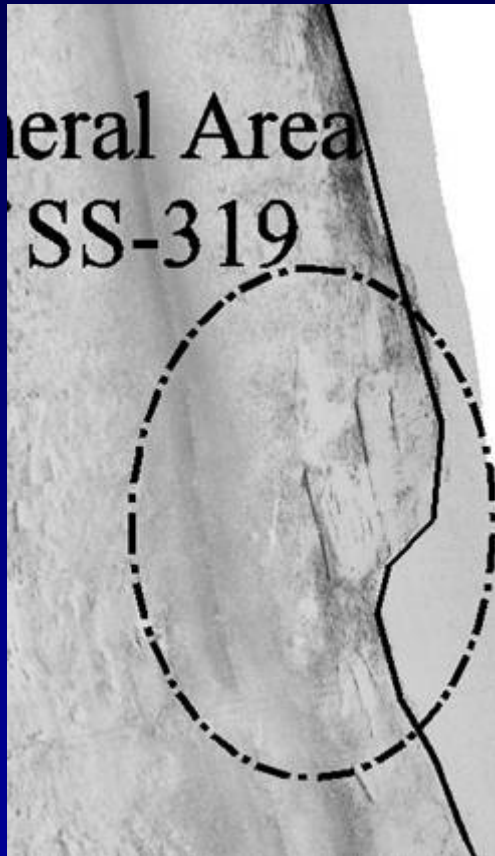
AREA L - TRENCH B

Area H – Trench B

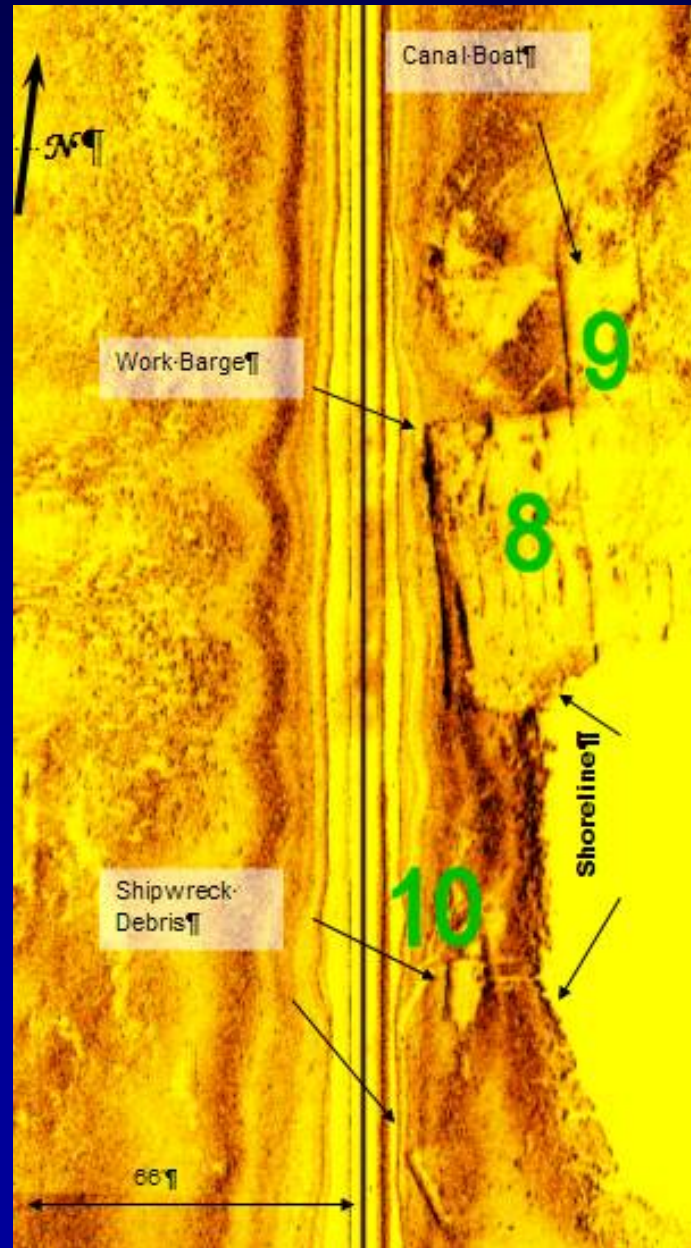


AREA H - TRENCH B

U-8, U-9, U-10



U-8, U-9, U-10



U-8

