

Hudson River Dredging Project Phase 2: Year 2

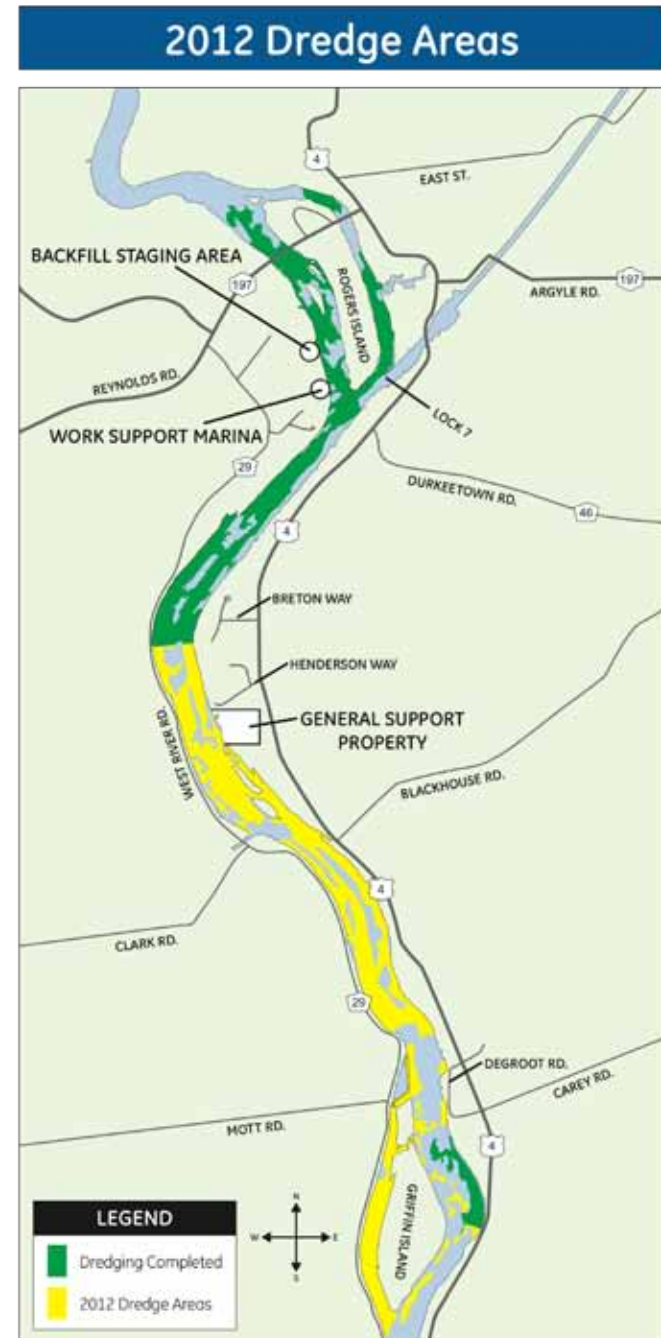


CAG Meeting
September 27, 2012



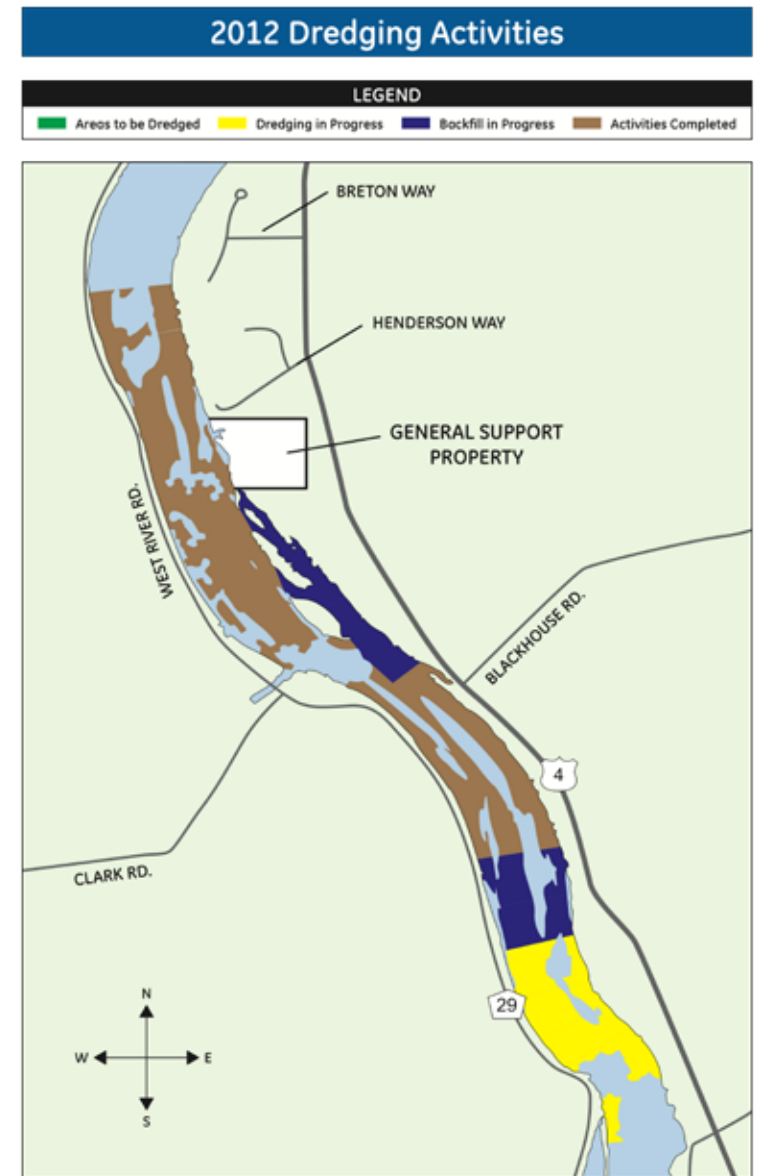
2012 Dredging

- > Began May 9 north of Route 4 staging area
 - Began one month earlier than in 2011
- > 24/6 work schedule
- > 2-mile stretch of river
 - From CU-26 to Griffin Island (CU-49)
- > 80 vessels in river
- > Goal: 350,000 cubic yards



2012 Dredging (as of 9/23/12)

- > Dredged 466,000 cubic yards to date (21 CUs completed or active)
 - 98 acres dredging complete
- > Dredging to continue as long as weather permits and locks remain open
- > Backfilling/capping after dredging
 - 248,000 tons of backfill/cap material placed
- > Backfill/cap complete or underway in 18 CUs
- > 4.39% dredge nodes capped (NCI)



Three Sisters Islands

- > Comprised of 2 CUs
- > 58,000 cy dredged
- > 36,000 cy backfilled/capped
- > Accessibility issues due to narrow channel & low water
- > Alternated between tree trimming and dredging
- > Backfill/cap layers limit draft; back out as short sections completed/accepted



Water Quality Monitoring

> Resuspension Standard:

Total PCB levels > 500 ppt for 5 days of any 7-day period at Schuylerville OR confirmed exceedance at Waterford



- No exceedance at Waterford
- No 5/7-day exceedances at Schuylerville to date
 - Single values > 500 ppt have occurred at Schuylerville on four separate occasions



Processing Facility Progress (as of 9/23/12)

> Facility improvements have resulted in productivity increase

> Unloaded 927 barges to date (674 barges*)

> 45 trains shipped off-site to date (54 trains*)

> More than 424,000 tons shipped (463,000 tons*)

- Material being shipped to OH, OK and MI for disposal

> 236 million gallons of water processed (197 million gallons*)

> 80,000 cy of filter cake (49,000 cy*)



Air Quality Monitoring

- > Occasional readings above the residential air standard at facility and river corridor
 - Tend to occur when dredging sediments with high PCB concentrations and high temperatures

- > Best management practices implemented
 - Relocation of dredge operations
 - Covering higher-concentration sediments with water
 - Tracking, prioritizing barges with higher-concentration sediments for transport, unloading and processing



2012 Habitat Planting

- > Harvested wild celery from Feeder Canal
- > Planted four CUs in 2011 dredge areas
 - 1.9 acres of SAV; 0.36 acres of RFW
 - Plants placed by divers and waders using dive platform with support vessels
- > Monitored planting in Phase 1 areas
- > 2012 dredge area habitat design underway



Next Steps

- > Locks close approx. Nov. 15
- > Demobilize equipment
- > Winterize plant & equipment
- > Complete shipping of material off-site by Dec. 31
- > Plan and procure for 2013



Questions

