



Hudson River PCB Superfund Site Project Update

Community Advisory Group Meeting

July 21, 2016

Facilities Demobilization/Restoration



Facility Demobilization/Restoration



Facility Demobilization/Restoration (continued)



- On-River Facilities – substantially complete
- Processing Facility - ongoing activities:
 - Pavement cleaning
 - Surface cleaning
 - Joint/crack cleaning
 - Stormwater sampling, cleaning and jetting
 - Stormwater basin removal/reconfiguration
 - Environmental sampling including various EPA confirmation sampling
 - Cleaning of buildings
 - Moving/removal of equipment
 - Property transfer
 - Expected to be complete by end of 2016

Habitat Reconstruction

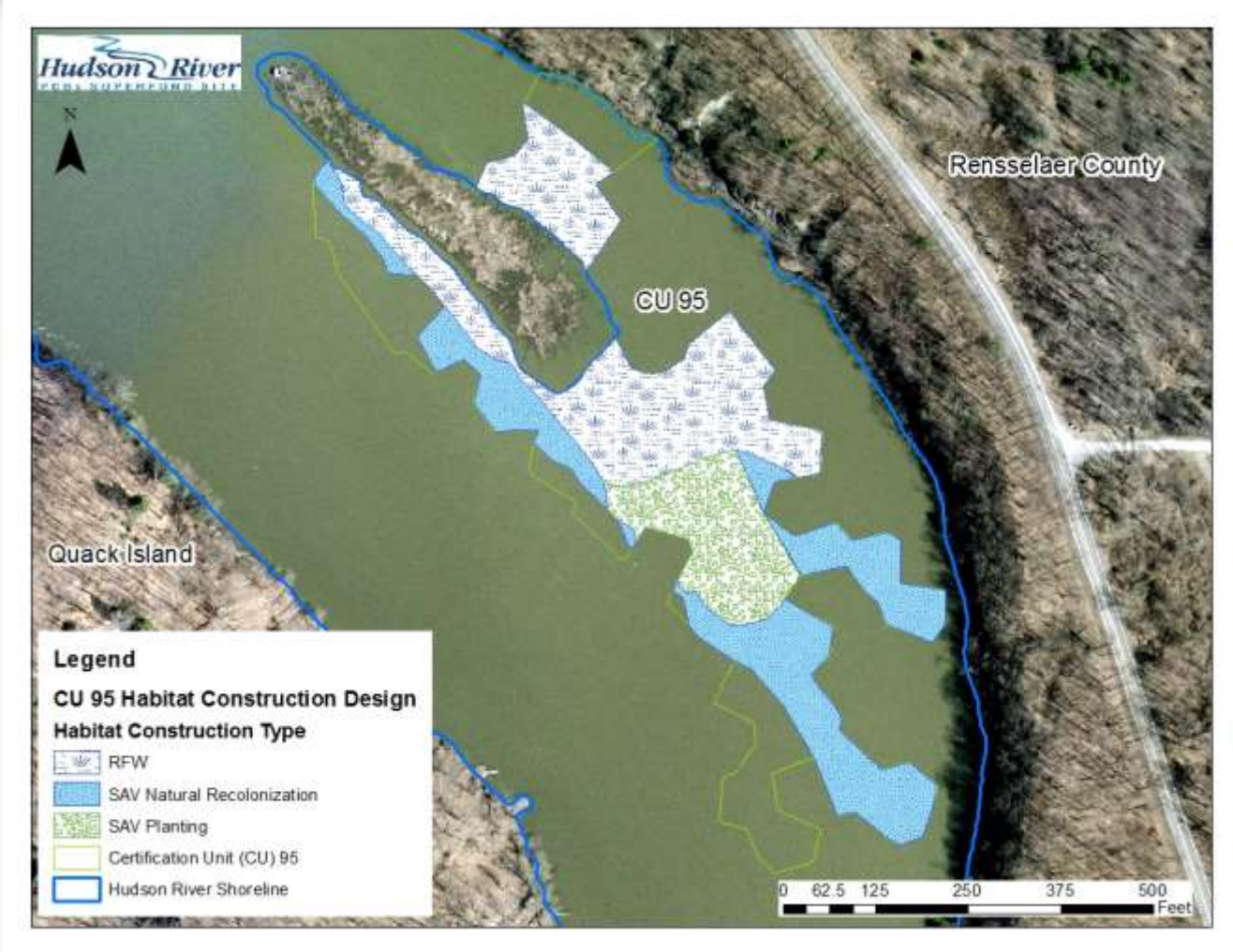


Habitat Reconstruction (continued)



- To date approximately 1.5 million Submerged Aquatic Vegetation (SAV) and Riverine Fringing Wetland (RFW) plants installed
- Habitat Construction Areas for 2016:
 - CU 60 (Thompson Island Dam Area) – RFW
 - CUs 94, 95, and 96 (Mechanicville Pool) – RFW and SAV
 - CUs 99 and 100 (Troy Pool) – RFW and SAV
- Planting expected to be completed by end of August
- Monitoring will continue into the future (including vegetation surveys in fall 2016)

Habitat Reconstruction

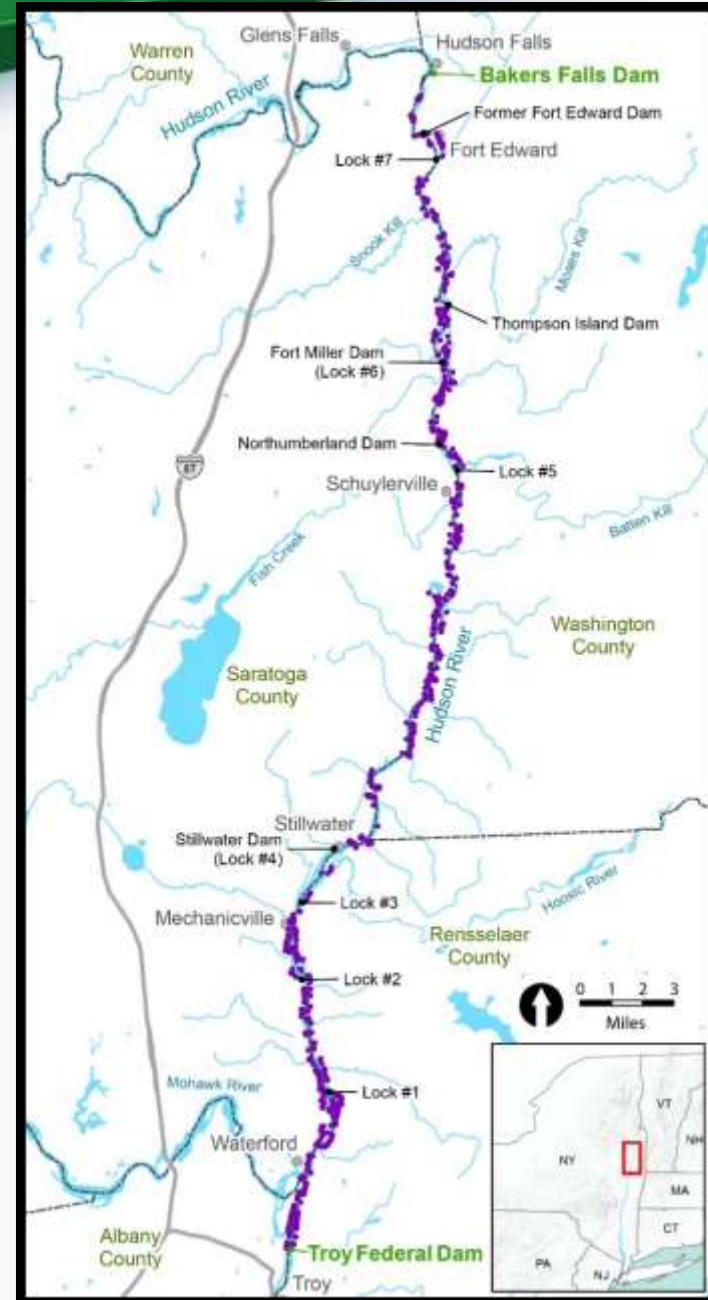


Floodplain Update



Floodplain RI/FS Soil Sampling 2016

- To date over 7,500 soil samples have been collected
- RI/FS sampling event – summer/fall 2016
 - Over 900 samples targeted at over 400 properties – Field Sampling Plan (FSP)
 - Includes former Fort Edward pool
 - About two months of field work



Sample Location Selection



- Objective - refine our understanding of the nature and extent of PCBs in the floodplain (where and at what concentration PCBs are in the floodplain)
- Number of sample locations for general areas determined by statistical needs
 - Likelihood of flooding
 - How the area floods
- Specific locations selected based on:
 - Spatial distribution
 - Land cover type
 - Consideration if the property was sampled in the past

Sample Collection



- The property owners will be contacted directly
- GE is sending out property access agreements (to include sampling factsheet)
- EPA is sending out a letter regarding ongoing floodplain studies (to include RI/FS factsheet)
- Most samples will be collected to a depth of 1 foot (some deeper samples will be collected)
- Soil sampling conducted with 2-inch diameter hand tool (holes filled)
- Locations will be surveyed



Sample Results



- Sample results and a map provided to property owners
- Sampling data will be incorporated into the existing floodplain database
- Floodplain Characterization Report (FCR) will be updated as additional information is collected
- Summer 2016 soil sampling results will be used for the screening level risk assessments



Additional 2016 Field Work



- Locate and survey drainage culverts and other important drainage features
- Make additional observations regarding standing water and potential human use areas - field checks

• Questions





Hudson River PCB Superfund Site

Five-Year Review (FYR)

Summary of June 22, 2016 EPA FYR Team Meeting

Meeting Summary



- Discussed roles, responsibilities and function of team - EPA selected the team and reviewed team membership
- Meetings should be attended primarily by lead person or alternate if they can't attend. Experts may be asked to contribute at some meetings based on the topic(s) being covered
- Team expected to meet monthly – EPA proposed rough schedule by month
- Meetings will be conference calls, workshops, and in-person meetings depending on topic/need

Technical Topics Presented/Discussed



- Long-term monitoring data collection (transition of programs)
 - Ongoing baseline monitoring – currently being conducted as part of RA
 - Operation Maintenance & Monitoring (OM&M) – some currently (Caps and Habitat)
- Key is to consistently assess the progress/function of the remedy



Technical Topics Presented/Discussed



- OM&M components and purpose:
 - Sediment – Assess recovery
 - Fish – Assess recovery, inform fish advisories
 - Water – Assess recovery
 - Caps – Assess effectiveness and stability of caps
 - Habitat – Assess return of function to the river
- The data on fish, water, and sediment will continue to be collected and used to monitor river recovery and will be part of the analyses used in the FYR

Potential Topics Proposed for Future Meetings



- Follow-up items from 2012 FYR
- Fish advisories/institutional controls
- Remnant deposit sites
- Discussion of protectiveness statements
- Project closeout
- Consideration of Remedial Action Objectives
- Air impacts
- Sediment sampling scope of work



Schedule and Other Considerations Discussed



- EPA working on more detailed schedule
- Ongoing collection/analysis of water data
 - Expect to include data up to September 2016
- New data
 - 2015 fish results (Data expected fall 2016)
 - Sediment sampling (Data expected late summer/fall 2016)
 - 2016 (spring fish) results (Data dependent on EPA approval for analysis, which is anticipated soon. EPA expects data September/October 2016 timeframe)
- Five-year review report expected to be drafted by early 2017. Internal EPA review required. Public comment period anticipated early 2017



Questions?